



# Well London

[www.london.gov.uk/welllondon](http://www.london.gov.uk/welllondon)

Well London is funded by the Big Lottery Fund. The aim is to work with local people to improve the health and wellbeing of Londoners in 20 neighbourhoods.

Well London is a partnership between seven organisations. Together they form the Well London Alliance.

- London Health Commission
- Central YMCA
- Groundwork London
- London Sustainability Exchange
- University of East London
- Arts Council England, London
- South London and Maudsley NHS Trust



Well London is all about feeling and being well, in mind and body. There are many aspects of our lives that influence how well we feel, that's why Well London focuses on the following themes:

- Healthy eating
- Physical activity
- Arts & culture
- Open spaces
- Mental wellbeing

There's a range of unique Well London events and activities taking place in your area, now and in the future. Just some of the activities taking place across London include: gardening and food growing, community feasts, sports sessions, and dance and art projects. All of the Well London activities are free and everyone is welcome.

There are also opportunities for local people to access free training and to volunteer. It's all about getting out, meeting people and having a good time.

For more information about what is happening in your area contact:

**Karen Taylor**      Arts Council England  
020 7608 4170  
[karen.taylor@artscouncil.org.uk](mailto:karen.taylor@artscouncil.org.uk)

**Toby Laurent Belson**      Brown Baby  
07957 318354  
[hello@brownbaby.co.uk](mailto:hello@brownbaby.co.uk)

Or visit: [www.london.gov.uk/welllondon](http://www.london.gov.uk/welllondon)



[www.activelivingmap.org.uk](http://www.activelivingmap.org.uk)

# Active living

**Notting Barns**  
Kensington & Chelsea

Key	
<b>Health advice and information</b>	
A1	My Pharmacy Ltd
A3	Pestle & Mortar
A3	White City Health Centre
A4	Babylon Health Ltd
A4	Druglink
A4	Greenlight Pharmacy
A4	Old Oak Surgery
A4	Phis Drug Store
B0	Community Integration Project
B0	Community Mental Health Team C (North Kensington)
B0	Crisis Resolution Team (North Kensington)
B0	Doctors Surgery
B0	Doctors Surgery
B0	St. Charles Family Centre
B1	Advocate for Mental Health
B1	Catholic Children's Society (Westminster)
B1	Equal People
B1	Family Friends
B1	Family Welfare Association - K and C Young Carer's Project
B1	St Quintin Health Centre
B2	Latimer Surgery
B2	Pharmacia
B2	The Scoliosis Association
B3	DePaul Trust - Lyon House
B3	Boots The Chemists Ltd
B4	Community Nurses Office
B4	Doctors Surgery
B4	E M S Pharmacy
B4	Morrison's Instore Pharmacy
B4	Superdrug Stores Plc
B4	Threshold Housing Advice Centre
C0	Arabic Speaking Advice Service
C0	Golborne Pharmacy
C0	Lijeke
C0	North Kensington Law Centre
C0	Rugby House Project
C1	Blenheim Project
C1	Citizens Advice Bureau (Kensington)
C1	Cruse Bereavement Care
C1	MIND - Kensington and Chelsea
C1	Open Age
C1	Pepper Pot Day Centre
C1	10 North Pole Road W10 6QL, 020 8969 1465
C1	59 South Africa Road W12 7PA, 020 8749 6844
C1	Australia Road W12 7PH, 020 8749 4141
C1	57 Uxbridge Road W12 8NR, 020 8749 0037
C1	The Old Coach House, 103A Devonport Road W12 8PB
C1	228-230A Uxbridge Road W12 7JD, 020 8743 1320
C1	St. Stephens House, 41 Uxbridge Road W12 8LH 020 8740 7328
C1	187 Railway Arches, Shepherds Bush Market W12 8DF, 020 8743 1772
C1	14 Sunbeam Crescent W10 5DW, 07957 198 606 ackys.kituba@ntlworld.com
C1	150 Barby Road W10 6BS
C1	150 Barby Road W10 6BS
C1	81 Barby Road W10 6AZ, 020 8960 2972
C1	Exmoor Street W10 6DZ, 0844 477 8935
C1	Exmoor Street W10 6DZ
C1	73 St. Charles Square W10 6EJ, 020 8969 3000 stella@afmh.org.uk <a href="http://www.afmh.org.uk">www.afmh.org.uk</a>
C1	73 St. Charles Square W10 6EJ, 020 8969 5305 rosenmary@cahchild.org.uk <a href="http://www.cahchild.org.uk">www.cahchild.org.uk</a>
C1	73 St. Charles Square W10 6EJ, 020 8964 5444 enquiries@equalpeoplekc.org.uk <a href="http://www.equalpeoplekc.org.uk">www.equalpeoplekc.org.uk</a>
C1	73 St. Charles Square W10 6EJ, 020 8960 9099 familyfriendsw10@btconnect.com <a href="http://www.familyfriends.freeserve.co.uk">www.familyfriends.freeserve.co.uk</a>
C1	73 St. Charles Square W10 6EJ, 020 8968 0535 kandc.youngcarers@fwa.org.uk
C1	St. Quintin Avenue W10 6NX, 020 8960 5677
C1	1 Waynflete Square W10 6UX, 020 8969 1242
C1	132 Bramley Road W10 6TJ, 020 8969 0053
C1	Unit 2 Ivebury Court, 325 Latimer Road W10 6RA
C1	189 Freston Road W10 6TH, 020 8964 9578
C1	5 The Broadway, Concord Shopping Centre Shepherds Bush Green W12 8PP, 020 8749 6271
C1	15/16 The Links, West 12 Shopping Centre Shepherds Bush Green W12 8PP
C1	15/16 The Links, Concord Shopping Centre, Shepherds Bush Green W12 8PP, 020 8749 1882
C1	194 Uxbridge Road W12 7JP, 020 8749 6883
C1	114-116 West 12 Centre, Shepherds Bush W12 8PH 020 8743 5744
C1	92 Uxbridge Road W12 8LR, 020 8743 8749
C1	126 Uxbridge Road W12 8AA
C1	North Kensington Law Centre, 74 Golborne Road W10 5PS, 020 8969 7473 <a href="mailto:info@nkic.co.uk">info@nkic.co.uk</a>
C1	106 Golborne Road W10 5PS, 020 8969 8741
C1	Hawkins House, 8 Telford Road W10 5SH
C1	74 Golborne Road W10 5PS, 020 8969 7473 <a href="mailto:info@nkic.co.uk">info@nkic.co.uk</a> <a href="http://www.nkic.co.uk">www.nkic.co.uk</a>
C1	314 Ladbroke Grove W10 5NQ
C1	321 Portobello Road W10 5SY
C1	140 Ladbroke Grove, Westway W10 5ND
C1	7 Thorpe Close W10 5XL, 020 8964 3455
C1	7 Thorpe Close W10 5XL, 020 8964 1333 fotheningham@kcmind.org.uk <a href="http://www.kcmind.org.uk">www.kcmind.org.uk</a>
C1	1A Thorpe Close, Ladbroke Grove W10 5XL, 020 8968 6940 <a href="mailto:info@pepperpotsdaycentre.co.uk">info@pepperpotsdaycentre.co.uk</a>

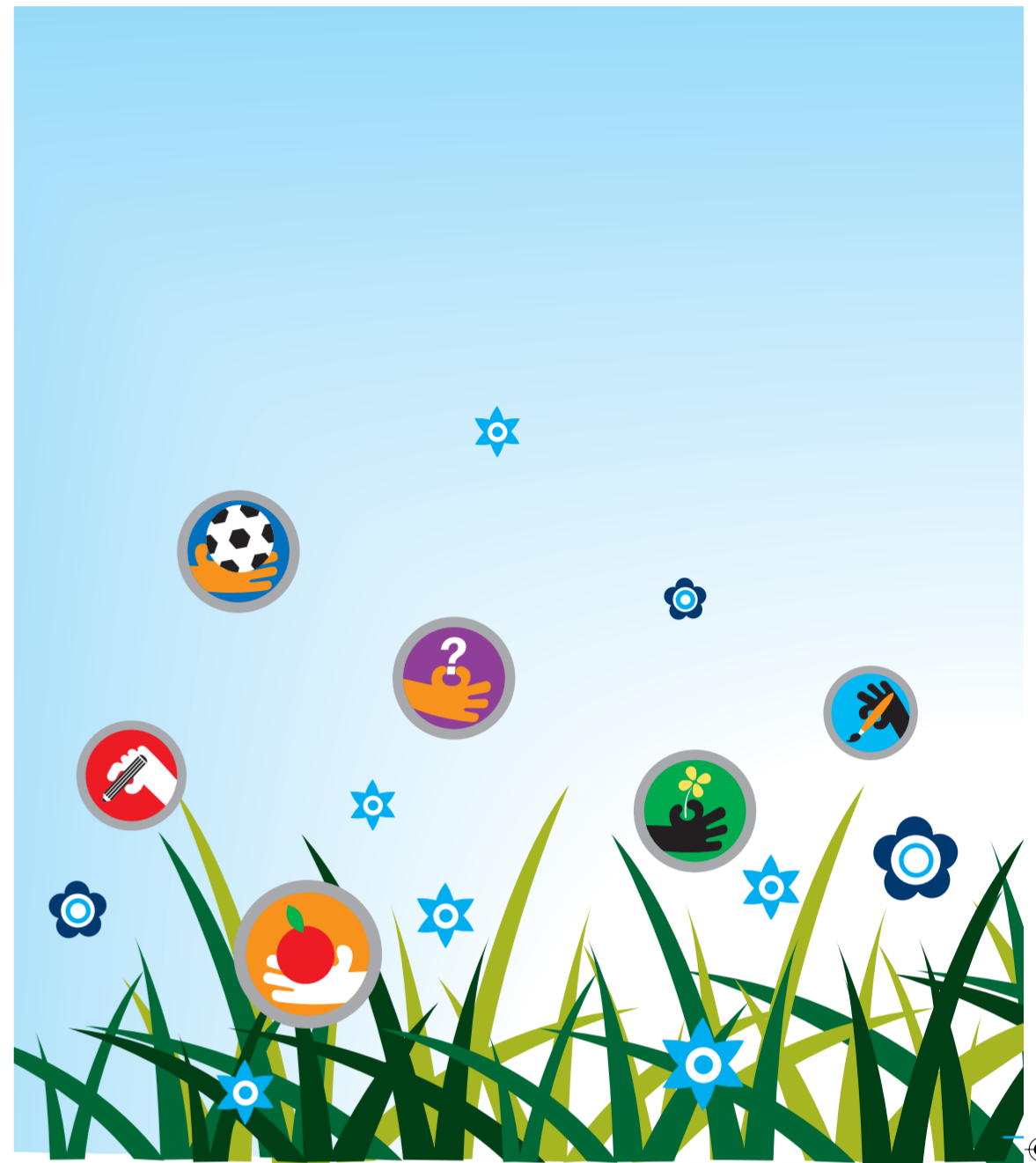
Grid ref.	Organisation	Contact details
-----------	--------------	-----------------

C1	The Blenheim	321 Portobello Road W10 5SY, 020 8960 5599 <a href="mailto:info@theblenheimproject.org">info@theblenheimproject.org</a> <a href="http://www.theblenheimproject.org">www.theblenheimproject.org</a>
C1	The Dispensary	173 Ladbroke Grove W10 6HJ, 020 8969 1483
C1	The Medical Centre	80 Cambridge Gardens W10 6HS, 020 8969 5517
C2	CARA Trust - St. Andrew's Methodist Church	240 Lancaster Road W11 4AH, 020 7243 6147 <a href="mailto:mail@caralife.com">mail@caralife.com</a> <a href="http://www.caralife.com">www.caralife.com</a>
C2	Clifford Evans Ltd	135 Ladbroke Grove W11 1PN, 020 7727 5323
C2	Doctors Surgery	226 Walmer Road W11 4ET, 020 7221 0174
C2	Dr Jackson	111-117 Lancaster Road W11 1QT, 020 7985 9900
C2	Foreland Medical Centre	188 Walmer Road W11 4EP, 020 7727 2604
C2	Social Council, Kensington and Chelsea	Lighthouse West London, 111 - 117 Lancaster Road W11 1QT, 020 7831 0330/020 7242 1010 <a href="mailto:info@kscsc.demon.co.uk">info@kscsc.demon.co.uk</a>
C2	Terrence Higgins Trust	Lighthouse West London, 111 - 117 Lancaster Road W11 1QT, 020 7831 0330/020 7242 1010 <a href="mailto:info.counselling@tht.org.uk">info.counselling@tht.org.uk</a> <a href="http://www.tht.org.uk">www.tht.org.uk</a>
C2	Walmer Road Clinic	226 Walmer Road W11 4ET
C2	Womans Trust	111-117 Lancaster Road W11 1QT
C3	Faro Pharmacy	16 Swanscombe Road W11 4SX, 020 7603 9226
C3	The Surgery	96 Sirdar Road W11 4EG, 020 7727 9238
C3	The Surgery	112 Princedale Road W11 4NH, 020 7727 2022
D0	Apex Pharmacy	73 Golborne Road W10 5NP, 020 8968 5808
D0	Cnwl Substance Abuse Family Therapy Centre	1 Elkstone Road W10 5NT
D0	Dillons Pharmacy	24 Golborne Road W10 5PF, 020 8969 1456
D0	Doctors Surgery	Unit 5, 1-31 Elkstone Road W10 5NT
D0	Doctors Surgery	12-14 Golborne Road W10 5PG, 020 8969 9245
D0	Family Therapy Service	1 Elkstone Road W10 5NT
D0	Golborne Medical Centre	12-14 Golborne Road W10 5PG
D0	H M Gillespie	Unit 5, 1-31 Elkstone Road W10 5NT
D0	Kensal New Town Clinic	8 Golborne Road W10 5NW
D0	The Golborne Medical Centre	16 Golborne Road W10 5PE, 020 8964 4801
D0	The Surgery	7 Golborne Road W10 5NY, 020 8969 1140
D1	ABC Pharmacy	196-198 Portobello Road W11 1LA, 020 7727 5470
D1	Doctors Surgery	12 Radington Road W10 5TG, 020 8962 9720
D1	Many Hands	Units 2 and 3, 10 Acklam Road W10 5QZ 020 8960 6777
D1	Parkside Clinic	63 Lancaster Road W11 1QG
D2	Baywood Chemists Ltd	239 Westbourne Grove W11 2SE, 020 7229 4553
D2	Colville Health Centre	51 Kensington Park Road W11 1PA, 020 7221 2650
D2	Community Nurse Office	241 Westbourne Grove W11 2SE
D2	D R Evans Pharmacy	15 Elgin Crescent W11 2JA, 020 7727 6882
D2	Help Counselling Centre	57 Portobello Road W11 2EB
D2	Notting Hill Medical Centre	14 Codrington Mews W11 3DH, 020 7727 5800
D2	Westbourne Grove Medical Centre	241 Westbourne Grove W11 2SE, 020 7229 5800
D3	Notting Hill Churches Homeless Concern	Methodist Church Centre, 240 Lancaster Road W11 3AT, 020 7221 7530
D4	Community Nurses	73 Holland Park W11 3SL
D4	Community Nurses	16 Portland Road W11 4LA
D4	Doctors Surgery	73 Holland Park W11 3SL, 020 7221 4334
D4	Doctors Surgery	16 Portland Road W11 4LA, 020 7727 7711
D4	Hillcrest Pharmacy	104-106 Holland Park Avenue W11 4UA 020 7727 6350
E2	Help Advisory Centre	57 Portobello Road W11 3EB, 020 7221 9974/7914
E2	The Pembridge Villas Surgery	45 Pembridge Villas W11 3EP, 020 7727 2222
E3	Boots The Chemists Ltd	96-98 Notting Hill Gate W11 3QA, 020 7727 4441
E3	Calder Chemist	55-57 Notting Hill Gate W11 3JS, 020 7727 3185
E3	Dennis & Co	12 Notting Hill Gate W11 3HL, 020 7229 0958
E3	Marriage Care	46 Notting Hill Gate W11 3HX
E3	The Surgery	17 Pembridge Road W11 3HG, 020 7221 0174

Grid ref.	Organisation	Contact details
-----------	--------------	-----------------

Physical activity and social clubs		
A0	Dalgarno Neighbourhood Trust	1 Webb Close, Dalgarno Way W10 5QB 020 8969 6300 <a href="mailto:info@dalgarnotrust.org.uk">info@dalgarnotrust.org.uk</a>
A0	St Quintin Park Residents Association	The Community House, Sutton Way W10 5HE 020 8964 0475 <a href="mailto:julie.chan-sing@tsccall.co.uk">julie.chan-sing@tsccall.co.uk</a>
A1	Burlington Danes Academy	Burlington Danes CoE School W12 0HR <a href="mailto:janna.aikem@burlingtondanes.org">janna.aikem@burlingtondanes.org</a>
A2	First Hand Ltd	Fatima Community Centre, Commonwealth Avenue W12 7QR, 020 8740 0477
A2	Nubian Life Resource Centre Ltd	50 Commonwealth Avenue W12 7QR, 020 8749 8017
A3	Queens Park Rangers Football Club	W12 7PA
A3	The White City Community Centre	India Way W12 7QT, 020 8743 4545
A3	White City Childrens Project	Australia Road W12 7PT, 020 8749 0909
A3	White City Residents Association	W12 7NU
A3	Youth Link	22 Exhibition Close, Wood Lane W12 7EE 020 8762 0865 <a href="mailto:connexionspa2@lbhf-cyc.org.uk">connexionspa2@lbhf-cyc.org.uk</a> W12 7JD
A4	Active Planet	6 Lime Grove W12 8EA, 020 8749 9969
A4	Text Book Venues	59 Godolphin Road W12 8JF, 020 8743 2034
A4	The Hut Association	Unit 8 Shaftesbury Centre, 85 Barby Road W10 6BN
B0	Kensington and Chelsea Advocacy Alliance	St. Charles Hospital, Exmoor Street W10 6DZ 020 8969 2488
B0	League of Friends of St Charles Hospital	73 St. Charles Square W10 6EJ, 0844 980 8667
B1	Equal People	2 St. Quintin Gardens W10 6AS
B1	Morpheth	116 Bramley Rd W10 6SU, 020 8960 0090
B2	Latimer Christian Fellowship	1 Crowthorne Road W10 6RP, 020 8969 0992 <a href="mailto:mamnger@westway.org.uk">mamnger@westway.org.uk</a> <a href="http://www.westway.org">www.westway.org</a>
B2	Westway Sports Centre	20 Stable Way W10 6QX
B2	Westway Stables	58 Bulwer Street W12 8AP, 020 8749 2371
B4	Shepherds Bush Families Project	Unit 2 Paul House, 308 Ladbroke Grove W10 5NH
C0	Ethiopian Refugee Help line	103A Worlington Road W10 5YB, 020 8960 3234
C0	Venture Community Association	317 Portobello Road W10 5SZ
C1	Association de Padres de Alumnos Colledge Bilingual	2 Thorpe Close W10 5XL
C1	Eritrean Community Rahwa Support Group	2 Thorpe Close W10 5XL, 020 8964 1277
C1	Eritrean Elders Welfare Association	1 Thorpe Close W10 5XL, 020 8964 5535
C1	Eritrean Parents and Children Association	2 Thorpe Close W10 5XL, 020 7324 3894
C1	Ethiopian Refugee Community (formerly Amhara)	2 Thorpe Close W10 5XL, 020 8969 2608 <a href="mailto:ewegjondon@googlemail.com">ewegjondon@googlemail.com</a>
C1	Ethiopian Women's Empowerment Group	Office 8, 7 Thorpe Close W10 5XL
C1	Kensington and Chelsea Forum	Office 1, 7 Thorpe Close W10 5XL, 020 8964 1333
C1	MIND Kensington and Chelsea	1 Thorpe Close W10 5XL, 020 8964 0989 <a href="mailto:h.leech.openage@btopenworld.com">h.leech.openage@btopenworld.com</a> <a href="http://www.openage.com">www.openage.com</a>
C1	Open Age	1a Thorpe Close W10 5XL, 020 8968 6940
C1	Pepper Pot	c/o 92 Oxford Gardens W10 5UW, 020 8969 9682
C1	Rugby Clubs - Youth and Community Centre	1 Thorpe Close W10 5XL, 020 8969 9105 <a href="mailto:info@sixtyplus.org.uk">info@sixtyplus.org.uk</a> <a href="http://www.sixtyplus.org.uk">www.sixtyplus.org.uk</a> W10 5XL
C1	Sixty Plus Club	1 Thorpe Close W10 5XL, 020 8969 9105 <a href="mailto:info@sixtyplus.org.uk">info@sixtyplus.org.uk</a> <a href="http://www.sixtyplus.org.uk">www.sixtyplus.org.uk</a> W10 5XL
C1	Supplementary Schools Forum	2-4 Mallon Road W10 5UP, 020 7598 4600
C1	The Westway Centre Epics	Lyndon House, 209 Ladbroke Grove W10 6HQ 020 8964 8411
C1	Turning Point	1 Thorpe Close W10 5XL, 020 8962 5720 <a href="mailto:info@westway.org">info@westway.org</a>
C1	Westway Development Trust	87 Blenheim Crescent W11 2EQ, 020 8746 8468 <a href="mailto:t.allenmersh@imperial.ac.uk">t.allenmersh@imperial.ac.uk</a> W11 1TQ
C1	Chelsea & Kensington Swimming Club	221 Walmer Road W11 4EY, 020 7229 2928 <a href="mailto:marcia@rpt.org.uk">marcia@rpt.org.uk</a> <a href="http://www.rugbyportobello.org.uk">www.rugbyportobello.org.uk</a>
C2	Lancaster West Children's Network	111-117 Lancaster Road W11 1QT, 020 7243 9800 <a href="mailto:info@kscsc.demon.co.uk">info@kscsc.demon.co.uk</a> <a href="http://www.kscsc.org.uk">www.kscsc.org.uk</a>
C2	Rugby Portobello Trust	1-9 St. Marks Road W11 1RG, 020 7727 6210
C2	Social Council, Kensington and Chelsea	
C2	Lighthouse West London	
C2	The Grove Resource Centre	

Grid ref.	Organisation	Contact details
-----------	--------------	-----------------



C2	Virgin Active Club (Notting Hill)	Holmes Place Health Club W11 1QT <a href="http://www.virginactive.co.uk">www.virginactive.co.uk</a>
C2	Woman's Trust Lighthouse West London	111-117 Lancaster Road W11 1QT 020 7034 0303/0304 <a href="mailto:administrator@wtrust.entadsl.com">administrator@wtrust.entadsl.com</a> <a href="http://www.womanstrust.org.uk">www.womanstrust.org.uk</a>
C3	Asociacion Eswela Cientifica Basilio	15 Winterbourne House, Portland Road W11 4LS 020 7727 3478 <a href="mailto:eswelacientificabasilio@yahooc.co.uk">eswelacientificabasilio@yahooc.co.uk</a>
C3	Escuela Cientifica Basilio	15 Winterbourne House, Portland Road W11 4LS
C3	Kensington Leisure Centre	Walmer Road W11 4PQ
C3	Octavia	85 Clarendon Road W11 4XQ, 020 7792 8434
C3	St Clements and St James Community Development Project	St Clements Community Centre, 95 Sirdar Road W11 4EQ, 020 7221 8810 <a href="mailto:centre@clementjames.co.uk">centre@clementjames.co.uk</a> <a href="http://www.clememjames.co.uk">www.clememjames.co.uk</a>
C3	St Francis Community Association	13 Hippodrome Place W11 4SF, 020 7792 8259 <a href="mailto:stfccuk@yahoo.co.uk">stfccuk@yahoo.co.uk</a>
C3	St Francis of Assisi	Community Centre Pottery Lane W11 4NQ 020 7221 0356
C4	Edward Woods Youth Club	Edward Woods Community Centre, 67-70 Norland Road W11 4TR, 020 8763 5941 <a href="mailto:edwardwoods@lbhf-cyc.org.uk">edwardwoods@lbhf-cyc.org.uk</a>
D0	Alhasnava Arabic womens project Suad Talsi Bays	4-5 Trelick Tower, Golborne Rd W10 5PA 020 8969 2292
D0	British School of Sport	41 Orchard Close W10 5RB, 020 8964 3699
D0	Edenham Day Centre	1 Elkstone Road W10 5YT, 020 8960 1301
D0	Muslim Cultural Heritage Centre	244 Acklam Road W10 5YG, 020 8964 1496
D0	Oremi Centre	Flat 1 Trelick Tower, 5 Golborne Road W10 5PA 020 8964 0033
D0	Westway Community Transport	240 Acklam Rd W10 5YG, 020 8964 4928 <a href="mailto:info@westwayct.org.uk">info@westwayct.org.uk</a> <a href="http://www.westwayct.org.uk">www.westwayct.org.uk</a>
D1	Serbian Community Centre	89 Lancaster Road W11 1QQ, 020 7727 8367
D2	Kensington Day Centre	Convent Gardens W11 1NJ, 020 7727 7337
E0	Academy Sports Centre	255 Harrow Road W12 5EZ
E0	Harbour Club (Notting Hill)	Emanuel Schoo W2 5EU <a href="mailto:mark.hendey@harbourclub.co.uk">mark.hendey@harbourclub.co.uk</a> <a href="http://www.harbourclub.co.uk">www.harbourclub.co.uk</a>
E0	Stowe Youth Centre	258 Harrow Road W2 5ES, 020 7266 8220
E0	Warwick Community Centre	300 Harrow Road W2 5HG, 020 8964 1900
E0	WECH Community Centre	416 Harrow Road W9 2HX, 020 8964 1900
E2	Bodyworks West @ Lambton	Lambton Place Health Club W11 2SH <a href="mailto:enquiries@lambton.co.uk">enquiries@lambton.co.uk</a> <a href="http://www.lambton.co.uk">www.lambton.co.uk</a>
E2	Campden Charities	27A Pembridge Villas W11 3EP, 020 724

B1	Oxford Gardens Primary School	Oxford Gardens W10 6NF
B1	Tabernacle School	210 Latimer Road W10 6QY
B2	Kensington and Chelsea Pupil Referral Unit	The Latimer Building, 194 Freston Road W10 6TT
B2	St Anne's Nursery School	Freston Road W10 6TT
C0	Barlby Primary School	Barlby Road W10 6BH
C0	Bevington Primary School	Bevington Road W10 5TW
C0	Saint Mary RC Primary School	East Row W10 5AW
C0	St Charles RC Primary School	83 St. Charles Square W10 6EB
C0	St Thomas' CofE Primary School	Appleford Road W10 5EF
C0	The Lloyd William School	12 Telford Road W10 5SH
C1	Instituto Espanol Canada Blanch	317 Portobello Road W10 5SY
C1	La Petite Ecole Francaise	90 Oxford Gardens W10 5UW
C1	Sion-Manning RC School for Girls	St. Charles Square W10 6EL
C1	St Charles Catholic Sixth Form College	74 St. Charles Square W10 6EY
C2	Maxilla Nursery School	4 Maxilla Walk W10 6NQ
C2	Saint Francis of Assisi Catholic Primary School	Treadgold Street W11 4BJ
C2	The Walmer Road School	221 Walmer Road W11 4EY
C2	Thomas Jones Primary School	St Mark's Road W11 1RQ
C3	Avondale Park Primary School	Sirdar Road W11 4EE
C3	St Clement and St James CofE Primary School	Penzance Place W11 4PG
C4	Norland Place School	162-166 Holland Park W11 4UH
C4	The Cardinal Vaughan Memorial RC School	89 Addison Road W14 8BZ
D0	Maple Walk School	Our Lady of the Holy Souls Church, 68 Hazlewood Crescent W10 5DJ
D1	Ainsworth Nursery School	47 Acklam Road W10 5YU
D1	Notting Hill Preparatory School	95 Lancaster Road W11 1QQ
D2	Colville Primary School	Lonsdale Road W11 2DF
D4	Holland Park School	Airlie Gardens W8 7AF
E0	St Peter's CofE School	Chippenhams Mews W9 2AN
E0	Westminster Academy	Harrow Road W2 5EZ
E1	St Mary of the Angels RC Primary School	Shrewsbury Road W2 5PR
E1	St Stephen's CofE Primary School	91 Westbourne Park Road W2 5QH
E2	College Park School	Garway Road W2 4PH
E2	Wetherby Preparatory School	19 Pembridge Villas W11 3EP
E3	David Game College	69 Notting Hill Gate W11 3JS
E3	Fox Primary School	Kensington Place W8 7PP
E3	Hawkesdown House	27 Edge Street W8 7PN
E3	Pembridge Hall School	18 Pembridge Square W2 4EH
E3	Southbank International School	36-38 Kensington Park W11 3BU
E3	Wetherby School	11 Pembridge Square W2 4ED



**Art**

A0	Corner Nine Arts Project	9 Dalgarno Gardens W10 5LL, 020 8968 6307
B0	Action Art Ltd	19 Shaftesbury Centre, 85 Barlby Road W10 6BN
B0	Aftab Theatre Workshop	16 Hill Farm Road W10 6DN, 020 8962 0105
B0	Amici Dance Theatre Company	Turtle Key Arts, Ladbroke Hall, 79 Barlby Road W10 6AZ, 020 8964 5060
B0	Avalon Productions	4A Exmoor Street W10 6BD, 020 8598 7333
B0	Children and Parents Carnival Association	15 Mathew Close, Barlby Road W10 5YJ 020 8968 4840 kimwoolford@gmail.com
B0	Horeb Music Productions	Office 25B Pall Mall Deposit, 124-128 Barlby Road W10 6BL, 020 8969 7803
B0	London Music Ltd	27A Pall Mall Deposit, 124-128 Barlby Road W10 6BL, 020 8871 0330
B0	North Kensington Community Centre	Dalgarno Way W10 5EL
B0	Rose's Thoughts Dance Co	C/O Turtle Key Arts Centre, Ladbroke Hall, 79 Barlby Road W10 6AZ, 020 8964 5060
B0	Turtle Key Arts	Ladbroke Hall, 79 Barlby Road W10 6AZ 020 8964 5060

B0	Yctv Foundation	77 Barlby Road W10 6AZ, 020 8964 4646
B1	The London Children's Ballet	73 St. Charles Square W10 6EJ, 020 8969 1555
B1	The Playground Studio	8 Latimer Industrial Estate, Latimer Road W10 6RQ 020 8960 0110
B1	Zikzira Dance Theatre Company	46 Highlever Road W10 6PT, 020 7460 1076
B3	Deep Recording Studios - Harrow Club	187 Freston Road W10 6TH, 020 8969 2528
C0	Design Transformation Group	39 Treverton Towers, Treverton Street W10 6BG 020 7514 7111
C0	New Technology Community Centre	12 Bruce House, St. Charles Square W10 6HD 07960 268 507
C0	Notting Hill Adventure Playground	Venture Community Centre, 103A W10 5YB 020 8969 7919 nottinghillap@hotmail.com
C0	Onlywomen Press Ltd	40D St. Lawrence Terrace W10 5ST, 020 8354 0796
C0	Post Office Theatre	22 Hewer Street W10 6DU, 020 8960 3337
C0	The Akehurst Bureau	345 Portobello Road W10 5SA, 020 8969 0453
C0	Theatre, He, Mme, Mm, Mm	345 Ladbroke Grove W10 6HA, 020 7243 4249
C0	Venture Community Association	103A Wormington Road W10 5YB, 020 8960 3234
C1	Dialectic	61D Oxford Gardens W10 5UJ, 020 8968 9860
C1	Horn Reflections Ltd	1 Thorpe Close W10 5XL, 020 8808 5524
C1	Karamah Holistic Arts Organisation	2 Thorpe Close W10 5XL, 07866 410 144
C1	Metronomes Steel Orchestra	Meanwhile Gardens Community Association, 156-158 Ladbroke Grove W10 5NB, 07774 216 746
C1	North Kensington Arts	1 Thorpe Close W10 5XL
C1	North Kensington Library	108 Ladbroke Grove W11 1PZ, 020 7727 6583
C1	North Kensington Video/Drama Project	1 Thorpe Close W10 5XL, 020 8964 2641
C1	Site Specific	147 Ladbroke Grove W10 6HJ, 020 7221 2766
C1	Temhogen Ltd	Office 4, 9 Thorpe Close W10 5XL, 020 8969 7999
C1	The Open Age Project	1 Thorpe Close W10 5XL, 020 8964 1900
C1	The Video College	1 Thorpe Close W10 5XL, 020 8964 2641
C1	Zenith Foundation	74 Oxford Gardens W10 5UW, 07816 842 411
C2	ACAVA	54 Blechynden Street W10 6RJ, 020 8960 5015
C2	Action Disability Kensington And Chelsea	A D K C Centre, Whitstable House, Silchester Road W10 6SB, 020 8960 8888
C2	Caribbean Carnival Club	316 Barandon Walk, Lancaster West Estate W11 1WH, 020 729 8812
C2	Ebony Steelband Trust	Unit 39 Baseline Business Studios, Whitchurch Road W11 4AT, 020 7792 1418
C2	Encompass	91C Clarendon Road W11 4JG, 020 7221 5543
C2	Genesis Carnival Company	Unit 38 Baseline Business Studios, Whitchurch Road W11 4AT, 020 7221 7664
C2	Historytalk	240A Lancaster Road W11 4AH, 020 7792 2282
C2	Notting Hill Carnival Ltd	Unit 5 Baseline Studios, Withchurch Road W11 4AS 020 7727 0072 pasevents@aol.com
C2	Portobello Film Festival	Unit 11 Acava Studios, 54 Blechynden Street W10 6RJ, 020 8960 0996
C2	True Heart Theatre	4 St. Andrews Square W11 1RH, 020 7221 2694
C3	Between The Notes Ltd	17A Princes Place W11 4QA, 020 7243 3387
C3	Bolton & Quinn Ltd	10 Pottery Lane W11 4LZ, 020 7221 5000
C3	Damayan People's Theatre	C/O Cfmw, St Francis Centre, Pottery Lane W11 4NQ 020 7221 6601
C3	Poetry Translation Centre	7A Clarendon Cross W11 4AP, 020 7221 4128
C3	Realeyes	17 Willow Way W11 4BS, 020 7221 1822
C3	St Clement & St James Community Development Project	St Clement's Community Centre, 95 Sirdar Road W11 4EQ, 020 7221 8810
C3	St Clements Wind Ensemble	19F Penzance Street W11 4QX, 020 7602 1586
C3	Urban Eye (Westway Project Unit 34)	Baseline Business Studios, Whitchurch Road W11 4A 020 7229 5921 office@urbaneye.org.uk
C4	Cardinal Vaughan Memorial School	89 Addison Road W14 8BZ, 020 7603 8478
C4	Lost Dog	Flat 5, 170 Holland Park Avenue W11 4UH 020 7603 2389
C4	The Colour Of Poppies Association	Flat 30 Addisland Court, Holland Villas Road W14 8DA, 020 7603 8623
C4	The Wrong Size	Ground Floor, 24 Holland Park Gardens W14 8EA

C4	Uc Partnership	11 Royal Crescent W11 4SL, 020 7602 2069
D0	Brownbaby	2A Southam Street W10 5PH, 020 8969 5656 hello@brownbaby.co.uk www.brownbaby.co.uk
D0	Candy Space Limited	Studio 209 Westbourne Studios, Acklam Road W10 5JJ, 020 7524 7744
D0	Flamboyant Community Association	1 Fernhead Road W9 3EU, 020 8969 4603
D0	Geddes Production Co	8B Wallerton Road W9 3PN, 020 7121 0223
D0	Great Western Studios	34 Great Western Studios, Great Western Road W9 3NY, 020 7234 0111
D0	Hardcore is More Than Music Ltd	Unit 26 Westbourne Studios, 242 Acklam Road W10 5JJ, 07985 115 888
D0	It Will Come...	Flat 619 Holmefield House, Hazlewood Crescent W10 5FT, 07979 693 230
D0	Minx Design	52 Great Western Studios, Great Western Road ~ W9 3NY, 020 7289 5621
D0	Moroccan Information And Advice Centre Association	61 Golborne Road W10 5NR, 020 8960 6654
D0	Notting Hill Mas Bands Association	Paddington Development Trust, Room 026 Westbourne Studios, 242 Acklam Road W10 5JJ 020 7575 3108
D0	Rachel Vermont And William Hancock Studio	219 Westbourne Studios, 242 Acklam Road W10 5JJ 020 7575 3212
D0	The Kerbs Partnership	Studio 99 Westbourne Studios, 242 Acklam Road W10 5JJ, 020 7575 3271
D1	African Image Alliance	2m Hedgegate Court, Powis Terrace W11 1JD 020 7313 9818
D1	Anderson O'Day Gallery	255 Portobello Road W11 1LR, 020 7221 7592
D1	Asterix Flat	1G Hedgegate Court, Powis Terrace W11 1JP 07956 963 835
D1	Beat Dis Trust	The Tabernacle, Powis Square W11 2AY 020 7565 7817
D1	Chand Aur Sitara Productions Limited	10 Tavistock Mansions, 49 St. Lukes Road W11 1DD 020 7727 2705
D1	Digital World Creative Community	Unit 20, 10 Acklam Road W10 5QZ, 020 8964 4092
D1	Escapade Theatre Company	7 Colville Houses W11 1JB, 020 7221 4104
D1	First Beat Mp	C/O The Tabernacle Youth Centre, The Tabernacle 34-35 Powis Square W11 2AY, 020 7656 7890
D1	Jazz Music Agency	14A McGregor Road W11 1DE, 020 7221 7688
D1	Lady Greys	27A Aldridge Road Villas W11 1BN, 07730 659 763
D1	Lighthouse Players	Flat 8B Hedgegate Court, Powis Terrace W11 1JP 020 7792 1574
D1	Lyndons Arts Trust	7 McGregor Road W11 1DE, 020 7792 3265
D1	Mangrove Steel Band	The Tabernacle Community Centre, 34-35 Powis Square W11 2AY, 020 7565 7890
D1	Mark Elie Dance Foundation	The Tabernacle, Powis Square W11 2AY 07947 484 021
D1	Paddington Integration Project	69 Tavistock Road W11 1AR, 020 7229 0405
D1	Sewa Beats	Top Floor Flat, 240 Westbourne Park Road W11 1EL 07903 127 374
D1	Splash Productions	309 Westbourne Park Road W11 1EF, 020 7229 4475
D1	Tabernacle Children's Mas' Band	The Tabernacle, 34-35 Powis Square W11 2AY 020 7565 7890
D1	Tabernacle Trust	The Tabernacle, 34-35 Powis Square W11 2AY 020 7565 7801
D1	Tablet	The Tabernacle, 34-35 Powis Square W11 2AY 020 7565 7810
D1	The Flying Gorillas	279A Westbourne Park Road W11 1EE 020 7727 5018
D1	The Muse At 269	269 Portobello Road W11 1LR, 07887 727 009
D1	The Portobello Collective	269 Portobello Road W11 1LR, 020 7792 8588
D1	The Post Office Theatre Company	The Malvern, 4 Bevington Road W10 5TN 020 8960 3337
D1	Zippos Circus	44A Aldridge Road Villas W11 1BW, 07836 641 277
D2	Apart	138 Portobello Road W11 2DZ, 0207 229 6146
D2	Art in Site	85 Lansdowne Road W11 2LE, 020 7229 8790
D2	Bitter Lemon Press Ltd	37 Arundel Gardens W11 2LW, 020 7727 7927

D2	Flying Monkeys	64 Pinehurst Court, Colville Gardens W11 2BJ 020 7727 5018
D2	Headway	1 Daley Thompson House, 27 Colville Square W11 2DT, 020 7221 9654
D2	Mama Put Productions	342 Westbourne Park Road W11 1EQ
D2	The Miktab	24 Twisaday House, 28 Colville Square W11 2BW 020 7792 9748
D2	Spoon Print Press	337 Westbourne Park Road W11 1EG, 020 7229 2763
D2	Tell Tales	82A Ladbroke Grove W11 2HE, 07736 043 961
D2	The Bette Bourne Company	20B Colville Terrace W11 2BU, 020 7229 5853
D3	Interact	31 Princes House, 52 Kensington Park Road W11 3BN, 020 7727 5908
D3	Oxford Chamber Music Festival	5 Kensington Park Gardens W11 3HB, 020 7792 8027
D3	People Can Run Theatre Company	Flat 24 Mead House, 123-125 Ladbroke Road W11 3PU, 07789 086 586
D3	Skolia Choir And Orchestra	34 Lansdowne Road W11 2LT, 07718 289 684
D3	Wishful Thinking	Flat 1 The Lodge, Kensington Park Gardens W11 3HA, 020 8968 0005
D4	Blast Theatre	50 Holland Park Mews W11 3SP, 020 7229 5275
D4	Kallaway Ltd	Portland House, 4 Portland Road W11 4LA 020 7221 7883
D4	Language of Dance Centre	17 Holland Park W11 3TD, 020 7229 3780
E0	Association of British Calypsonians Ltd	Yaa Asantewaa Community Centre, 1 Chippenhams Mews W9 2AN, 020 7286 1656
E0	Capoeira Massive	43B Goldney Road W9 2AR, 07956 990 879
E0	Carnival Village	1 Chippenhams Mews W9 2AN, 020 7286 1656
E0	Dreamarts	258 Harrow Road W2 5ES,
E0	Gologan Theatre	44 Finch Lodge, Carlton Gate W9 3TB, 020 7266 3677
E0	London Renegades	Flat 1 Rodborough Court, Hermes Close W9 2AJ 020 7289 5681
E0	Paddington Arts	32 Woodfield Road W9 2BE, 020 7286 2722
E0	Yaa Asantewaa Arts & Community Centre	C/O Yaa Asantewaa Arts And Community Centre, 1 Chippenhams Mews W9 2AN, 020 7286 1656
E1	Exile Films	22 Sutherland Place W2 5BZ, 020 7221 0457
E1	Short Ends World Film Schools Festival	Flat 5 Tolchurh, Dartmouth Close W11 1DT 020 7243 6955
E1	St Mary Of The Angels	Moorhouse Road W2 5DJ, 020 7229 0487
E1	Sugar Free Art	71A Westbourne Park Road W2 5QH, 020 7243 2111
E1	The Rhythm On The Street	90B Chepstow Road W2 5QP, 020 7727 9919
E2	Flow	1-5 Needham Road W11 2RP, 020 7243 0782
E3	Diaballein Theatre Company	17 Broadwalk Court, Palace Gardens Terrace W8 4EE, 020 7243 1038
E3	Fox School Carnival Band	C/O 23 Linden Gardens W2 4HD, 020 7221 8867
E3	Future Systems	The Warehouse, 20 Victoria Gardens W11 3PE 020 7243 7670
E3	Gate Theatre	11 Pembridge Road W11 3HQ, 020 7229 5387
E3	Mangrove Mas Band	Campden Hill House, 192-196 Campden Hill Road W8 7TH
E3	Portobello Books Ltd	Eardley House, 4 Uxbridge Street W8 7SY 020 7908 9892
E3	The Speedwell Trust	180-182 Campden Hill Road W8 7AS, 020 7727 3866
E3	The Watch-Men Agency	44 Ossington Street W2 4LY,
E4	London Drawing Class	8 Airlie Gardens W8 7AJ, 020 7598 1050



**Food**

A4	Shepherds Bush Market	Uxbridge Road
C0	Portobello Road Market	Portobello Road
D0	Golborne Road Market	Goldborne Road
D1	Portobello Green Market	Acklam Road W10 5QZ
E4	Notting Hill Farmers' Market	Kensington Place



A

B

C

D

E

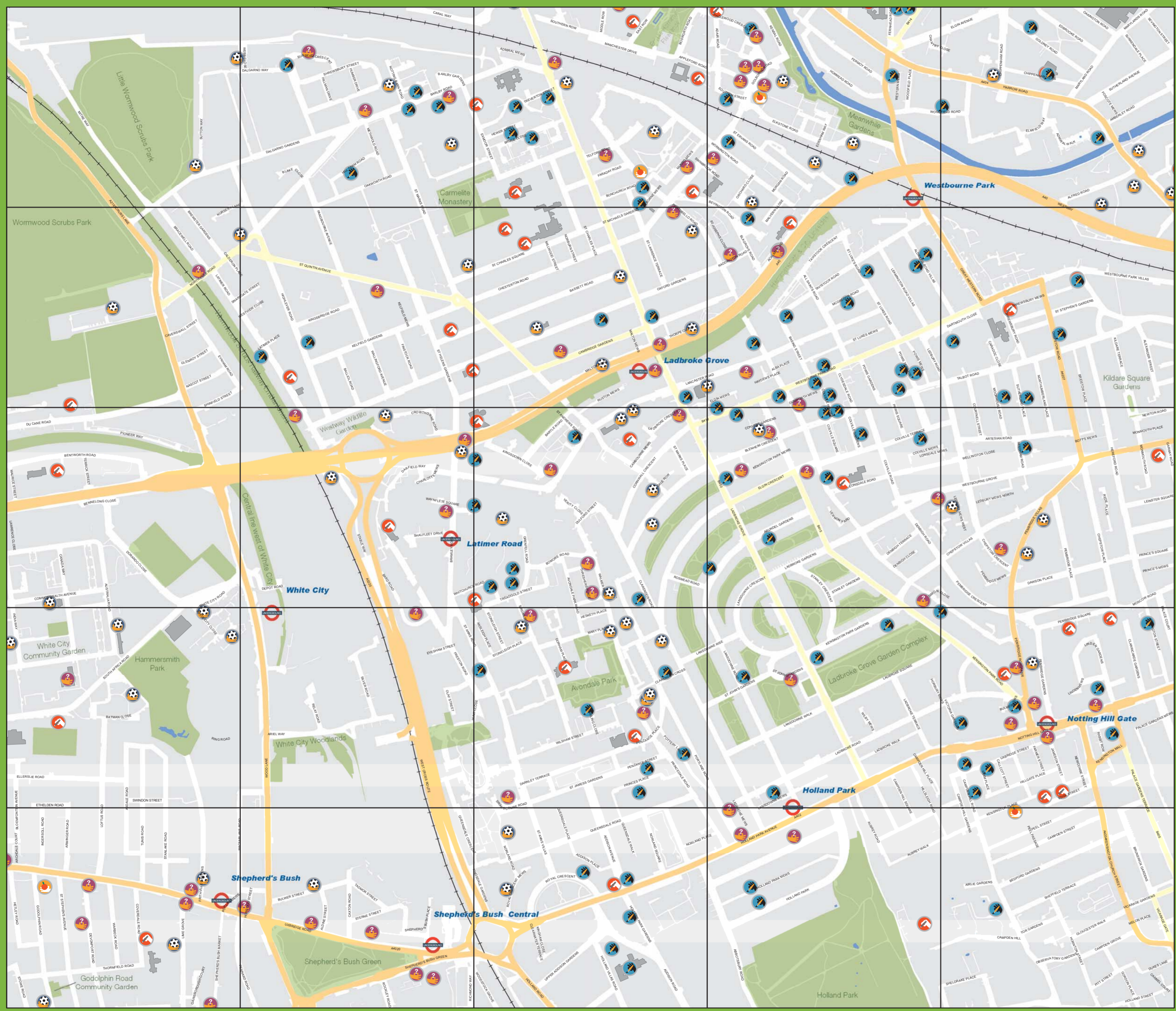
0

1

2

3







4



This map provides information on all of the different facilities in your local area that can help you live a healthier lifestyle. Parks, allotments, gyms and sports centres, advice clinics and GP's surgeries, if it will help you get fit and healthy, it's on the Active Living Map.

We hope you find this map useful. Please send any comments you may have or any ideas on what you would like to see on future versions of this map to: [alm-london@groundwork.org.uk](mailto:alm-london@groundwork.org.uk)

### Key

-  Physical activity and social clubs
-  Health advice and information
-  Art
-  Environment
-  Schools
-  Food

Note: Occasionally two or more items may be situated in the same location, where this occurs you will only see one symbol on the map

# Active Living Map